

8天6晚

# 韩国 首尔/济州岛

南怡岛 | 雪岳山 | 江原道 | 爱宝乐园

## Korea Seoul / Jeju Island

Nami Island | Mt Sorak | Gangwondo | Everland

LIKE us Facebook



www.top-one.com.my



### 北村韩屋村

北村从以前起就是众所周知的两班贵族居住地区，里面的住宅全是朝鲜时代的青瓦房，作为上流阶层的建筑形态保存至今。

Validity: MAR - NOV

CODE: 8ICNCJU



## 8天6晚 首尔 + 济州岛 + 江原道

**DAY 1** 新加坡或吉隆坡国际机场 (飞往) 仁川  
机上用餐

**DAY 2** 抵达仁川 - 首尔 / 金浦机场 (飞往) 济州岛  
(午餐: 猪骨汤) / (晚餐: 韩定食)

【**龙头岩**】参观气势万千之龙头岩，这岩石是火山爆发时所喷出的熔岩，在流入海中所形成。

【**神奇之路**】明明是条上坡路，车子却不用开动也能往上滑行，而下坡路，车子竟然停顿。

住宿 Jeju Ramada City Hall or similar



**DAY 3** 济州岛  
早餐 / (午餐: 黑毛猪肉) / (晚餐: 鲍鱼海鲜锅)

【**城山日出峰**】这是济州市东部山城半岛尽头,火山口已成了草原，三面悬的崖峭壁，好像一顶王冠。

【**城邑民俗村**】体验从过去到现在的实际村庄生活。

【**艺术博物馆**】展示和推广现代和当代艺术作品，为游客提供一个独特而丰富的艺术体验。

【**牙月海岸咖啡街**】户外的桌位区可以欣赏海岸景色这样的美景（包含美式咖啡一杯）

【**塔洞购物街**】济州岛著名的购物街

住宿 Jeju Ramada City Hall or similar

**DAY 4** 济州岛 (飞往) 金浦机场 - 江原道  
早餐 / (午餐: 韩式辣炒鸡) / (晚餐: 大黄豆豆腐锅)

【**南怡岛**】让您游览及体会剧种的爱情场景，令人回想“冬季恋歌”剧中的浪漫情节。

【**大埔渔港**】东海岸著名的海鲜渔港，不同于其他港口，这里少有大渔船的踪影，只有小型渔船轻轻地进出，仿佛是不愿惊扰东海一贯的安宁与和谐。

住宿 The N resort or similar

**DAY 5** 江原道 - 首尔  
早餐 / (晚餐: 韩式烤肉)

江原道采水果

11月-6月 草莓 (300g /人) | 5月-6月 樱桃 (400g /人)

6月-8月 蓝莓 (500g /人) | 7月-10月 蜜桃 (2颗 /人)

8月-10月 葡萄 (500g /人)

【**爱宝乐园**】(自由卷)世界七大综合主题乐园，有三星集团建立，由五个主题组成的主题乐园，随着不同的季节而展开不同的庆典和活动。(因天气状况而定，本社将有权更改至“乐天世界乐园”)

住宿 Ibis Isadong or similar

**DAY 6** 首尔  
早餐 / (午餐: 海鲜鲍鱼烤鱼) / (晚餐: 人参鸡汤)

【**景福宫+韩服体验**】朝鲜王朝的正宫，也是朝鲜五大宫阙中规模最大的。安排大家穿上韩服在景福宫里拍照。

【**广藏市场**】在韩国的几个购物景点中，最能感受到韩国特色的就是广藏市场了。来来往往的人流、吆喝着的韩语、琳琅满目的商品，这才是韩国市场特有的风情，绝不是在一般的百货或购物商厦里能体会得到的。

【**益善洞**】益善洞主要街道有100多年历史的韩屋所改造的个性商店、饮食店、民宿等，在这里不仅可以购物、享受美食，还可以近身感受到韩国文化。

【**东大门**】从批发到零售的一站式购物，东大门从很早以前开始就是游客和商家最喜爱的购物天堂。

住宿 Ibis Isadong or similar

**DAY 7** 首尔  
早餐 / (午餐: 部队锅)

【**人参公卖局**】及【**护肝宝专卖店**】，可购买到具有养肺阴，补肾阳。“人参之极品产于韩国”的记载，被认为能使元气旺盛的神秘名药的高丽人参。再到会让女生疯狂的【**化妆品免税店**】。

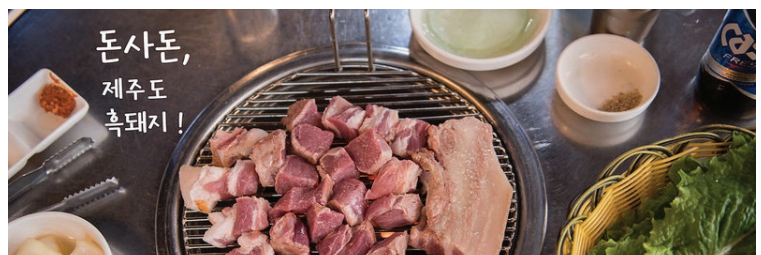
【**明洞**】购物天堂，绝对是每一位韩流梦者的天堂

【**涂鸦秀**】现场绘画技术和先进的媒体艺术相结合的新概念非语言表演形式。

住宿 Ibis Isadong or similar

**DAY 8** 返回美丽家园  
早餐 / 机上用餐

早餐后，前往【**韩国伴手礼**】后接送前往机场。



4月：春天樱花季； 5-8月：夏天绣球花季； 9-11月：秋天枫叶季节



# 8DAY 6NIGHT Seoul + Jeju Island + Gangwon-do

**DAY 1** Kuala Lumpur / Singapore (Flight) Incheon  
Meal on Board

**DAY 2** Incheon - Seoul / Gimpo Airport (Flight) Jeju Island  
Lunch(Kamjatang) / Dinner(Hanjeongsik)

Transfer to Gimpo domestic airport for your flight to **Jeju Island**

**Youngdum Rock** a natural lava formation of a dragon head to jutting out of the sea which lies on the coast just west of Jeju.

**Mysterious Road** see how this crazy phenomenon happens right before your very eyes.

**Hotel** Jeju Ramada City Hall or similar



**DAY 3** Jeju Island  
Breakfast / Lunch(Black Pork BBQ) / Dinner(Abalone seafood Hotpot)

**Seongsan Sunrise Peak** a natural lava formation of a dragon head to jutti

**Seongeup Folk Museum** it has been designated as a Folklore Preservation Zone. Here you can meet the friendly island people who still live behind stone courtyard walls in thatched-roof lava wall homes.

**Arte Museum** Display and promote modern and contemporary art works, providing visitors with a unique and rich art experience.

**Aewol Seaside Café Street:** The outdoor table area allows you to enjoy the beautiful scenery of the coast. (included black café)

**Tapdong Shopping Street** Jeju Island's famous shopping street is one of the attractions that tourists cannot miss.

**Hotel** Jeju Ramada City Hall or similar

**DAY 4** Jeju Island (Flight) Seoul - Gangwon-do  
Breakfast / Lunch(Chicken Dakgalbi) / Dinner(Hwangdae Fish Dofu Steamboat)

**Nami Island** The symbolic backdrop of mega hit Korean Drama "Winter Sonata". You can feel the excitement of the romantic drama and take a walk down beautiful tree-lined paths with your loved ones features in the most memorable scenes.

**Sinheongs Temple :** Shenxing Temple is very popular. It is a must-visit place for those who visit Seoraksan Mountain.

**Hotel** The N resort or similar

**DAY 5** Gangwon-do - Seoul  
Breakfast / Dinner(Korean BBQ)

## Fruit picking

Nov-June: Strawberry (300g/person) | May-June: Cherry (400g/person) | June-Aug: Blueberry (500g/person) | July-Oct: Peach (2 pcs / person) | Aug-Oct: grapes (500g / person)

**Everland** Seven of the world's largest comprehensive theme parks, established by Samsung Group. The theme park is composed of five themes, and different celebrations and activities are carried out according to different seasons.

(Depending on weather conditions, our company reserves the right to change the location to "Lotte World Park")

**Hotel** Ibis Insadong or similar

**DAY 6** Seoul  
Breakfast / Lunch(Seafood Set Meal) / Dinner(Ginseng Chicken)

**Gyeongbok Palace with Hanbok Wearing** The main palace of the Joseon Dynasty is also the largest of the five major palaces in Korea. Arrange for everyone to wear Hanbok and go out to Gyeongbokgung Palace.

**Gwangjang Market** Among several shopping attractions in South Korea, the one where you can feel the most Korean characteristics is Gwangjang Market. The flow of people coming and going, people shouting in Korean, and a dazzling array of products are the unique style of the Korean market, which can never be experienced in ordinary department stores or shopping malls.

**Ilkseongdong** On the main street of Ikseon-dong, there are unique shops, restaurants, B&Bs, etc. that have been renovated from Korean houses with a history of more than 100 years. Here you can not only shop and enjoy delicious food, but also experience Korean culture up close.

**Dongdaemun Market** One-stop shopping from wholesale to retail, Dongdaemun has been a tourist attraction since a long time ago. A favorite shopping paradise for customers and merchants.

**Hotel** Ibis Insadong or similar

**DAY 7** Seoul  
Breakfast / Lunch(Korean Army Steamboat)

Ginseng Outlet, Korea Cosmetics and Herb Outlet experience the famous Korea cosmetics.

**Myeondong Street is a shopping paradise, every Hallyu fan's dream comes to life.**

**Hero Show** A new concept of non-verbal performance that combines live painting techniques and advanced media arts form.

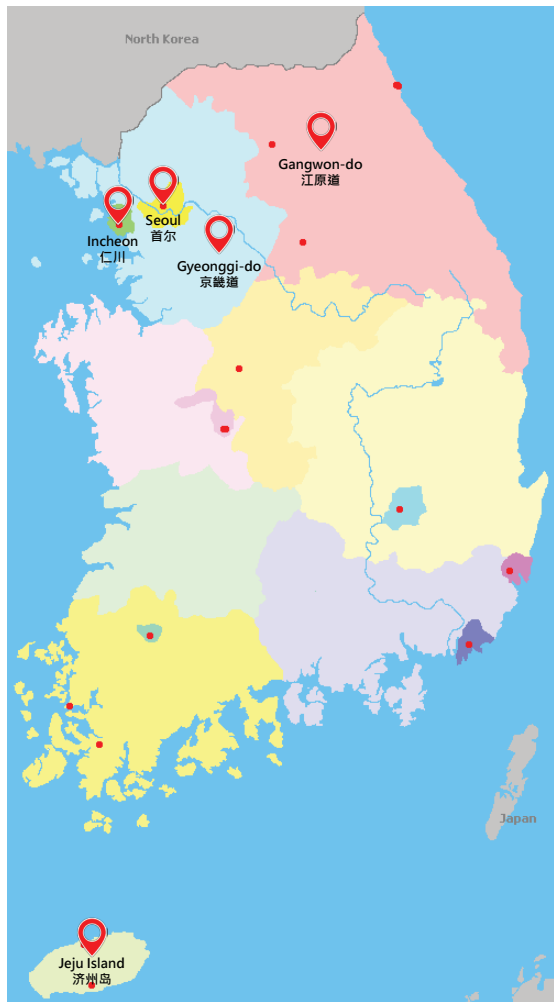
**Hotel** Ibis Insadong or similar

**DAY 8** Depart Home Sweet Home  
Breakfast / Meal on Board

After breakfast, have a Grocery shop and transfer to Airport







All Pictures shown are provided by Korea Tourism. Or Getting from Internet for illustration purpose only

## Travel Information

### Currency

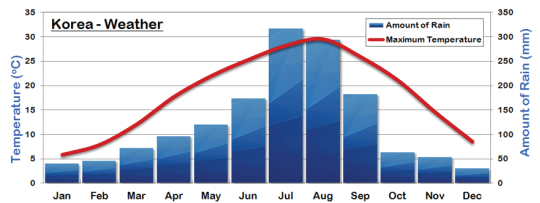
South Korean Won  
1000 KRW = MYR 3.50

### Time Zone

GMT +9 (1 hours behind Malaysia Time)

### Phone Code

+82



## Travel Restriction

- Malaysia have to apply K-ETA  
- Valid Passport, E-mail Address, Face Image Photo
- K-ETA is valid for 2 years once issued.
- Upon Arrival, PCR test to be taken at the public health centre.a

### SOUTH KOREA PACKAGE ADDITIONAL CONDITIONS:

1. Tours are conducted in Mandarin Speaking Tour Guide Services.
2. Triple Room, Third person shall be based on a roll-away bed.
3. Confirm depart group minimum 10 person, 15 person arrange Tour Leader Services.
4. Korea Traditional Meals are 4-5 per table
5. Local Product: Ginseng Outlet, Korea Cosmetics, Herb Outlet, Local Product.

### TRAVEL DOCUMENT

It is passenger's responsibility to ensure that have a valid international passport at least six (6) months from the return date of the trip, relevant visas & health certificates if required.

Travel Insurance: All tour members are encouraged to buy travel insurance to safeguard themselves against sickness, loss of money, cancellation, flight delays or lost of baggages.

### TERMS & CONDITIONS:

1. Itineraries, meals, hotels and transportation are subject to change without prior notice.
2. Every person participating in Top-One Travel's Tours all travel at his/her own risk. Top-One Travel shall not be held liable to any person for additional expenses that may be incurred due to delays or changes in any transport services, sickness, weather, strikes, war or other causes.
3. Top-One Travel reserves the right to make changes to or cancel the itinerary at any time due to unforeseen circumstances, especially during peak periods or in the event of a force majeure.
4. For other terms & conditions, please refer our Tour Consultant of visit <http://www.top-one.com.my/more/tnc>.
5. All Pictures shown are for illustration purpose only.

### 韩国配套基本条款

1. 所有行程景点以中文讲解为准。
2. 如三人房型，房内第三名住客床褥将以折叠式为准。
3. 成团人数为10人。15人以上安排领队。
4. 韩国餐食安排均为4-5人一桌，韩式料理包含冷开水。
5. 土产店： 人参公卖局，护肝宝专卖店，美妆品，土产店

### 旅游文件

护照及签证 - 团员有责任确保护照有效期至少6个月或以上（从返程日期计算起），并且取得相关国家签证或准证。任何签证申请团员有责任提供任何签证申请相关资料。

旅游保险 - 出发前，建议您购买全面的旅游保险。

### 条规:

1. 所有行程，膳食，酒店住宿和交通可能会有所更动，依据任何的情况而定，恕不另行通知。
2. 若出现无法预测的特殊情况，特别是旅游旺季期间，第一旅游将保留更改行程或取消行程的权利。
3. 每位参与第一旅游的成员，必须为自身安全或行为负责。若出现无法预测的特殊情况（例如：交通延误/取消，天气，疾病，示威，战争，天灾等），而引发而外指出问题，第一旅游一概不负责，旅客需自行负责额外的费用。
4. 详细条规，请联络我们任何旅游顾问或游览<http://www.top-one.com.my/more/tnc>。
5. 以上图片仅供参考用途，请以实物为准。

## 第一旅游机构（马）有限公司

Reg no. 153982-T KPL1000

## TOP-ONE TRAVEL SERVICES CORPORATION (M) SDN BHD

**Headquater:** No.16-16A-16B, Jalan Sutera 2 (Wisma Top-One),  
Taman Sentosa, 80150, Johor Bahru, Johor, Malaysia  
Hotline : +607-334 3388 📞 +6012-782 3788 📧 [info@top-one.com.my](mailto:info@top-one.com.my)

**Branch:** No.3, Jalan Molek 1/29 (Wisma Top-One),  
Taman Molek 81100, Johor Bahru, Johor, Malaysia  
Hotline : +607-354 6666 📧 [info.molek@top-one.com.my](mailto:info.molek@top-one.com.my)

**Contact :**  
联系:

update: 9 May 2024 2:03 pm